



Decor-Alum
ALUMINIO



Distribuidor de aluminios y accesorios



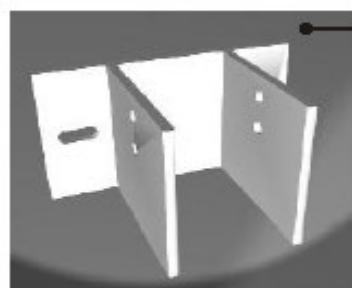
Accesorios Piel de Vidrio



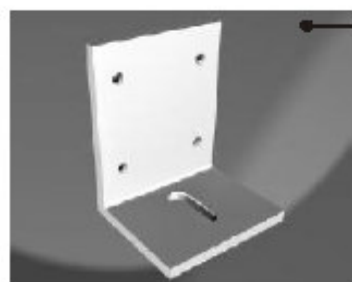
www.decoralum.com.ar - info@decoralum.com.ar
Belgrano 3740 (1210) Cap. Fed. (011) 4931-3428 / 4956-0726 / 4957-0264



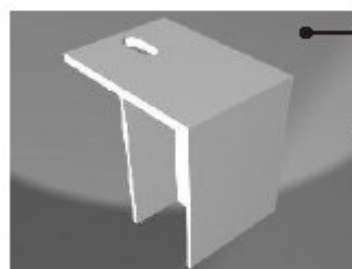
Accesorios Piel de Vidrio



ANC-951
Anclaje columna
FC-202/FC-233/FC-614
Material: aluminio



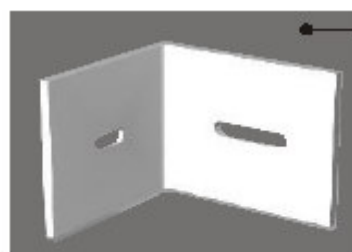
ANC-964
Anclaje inf. columna
FC-202/FC-233/FC-614
Material: aluminio



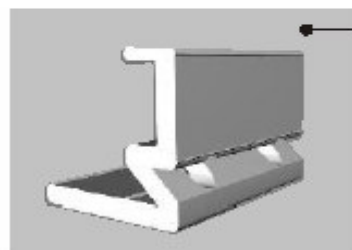
ANC-965
Anclaje telescópico
para FC-202
Material: hierro galvanizado



ANC-966
Anclaje columna
FC-325/FC-326
Material: aluminio

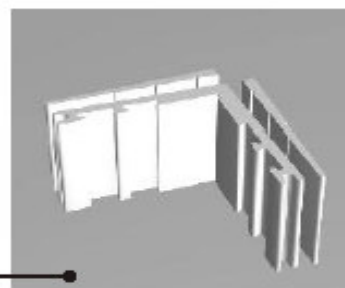


ANC-967
Anclaje columna
FC-244
Material: aluminio

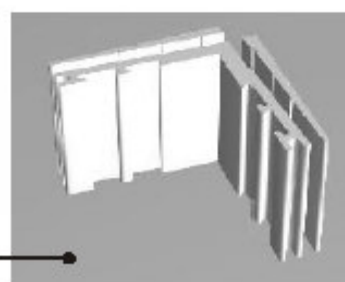


CON-362
Escuadra de armado
hoja FC-208 / FC-293
Material: aluminio

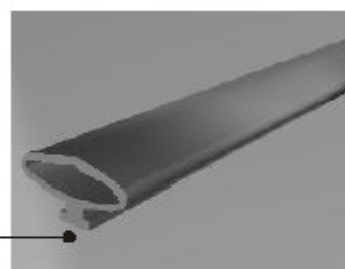
CON-403
Escuadra 32mm
para FC-516 y FC-630
Material: aluminio



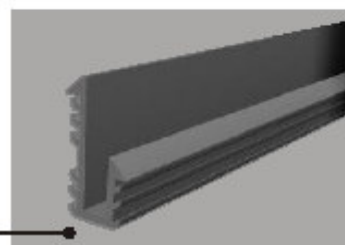
CON-405
Escuadra 36,5mm para
FC-228/261/576/293
Material: aluminio



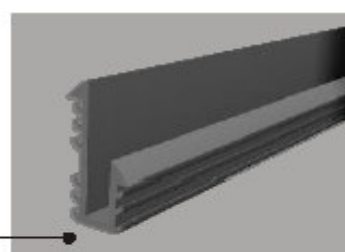
GUA-007
Burlete superior hoja
Material: EPDM
Alternativa: silicona



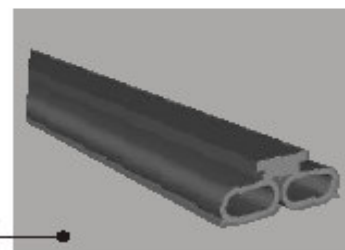
GUA-033
Burlete vidrio 6 mm
Material: EPDM



GUA-034
Burlete vidrio 4 mm
Material: EPDM

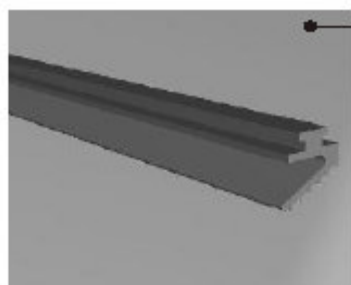


GUA-160
Burlete para columna
Material: EPDM ó silicona

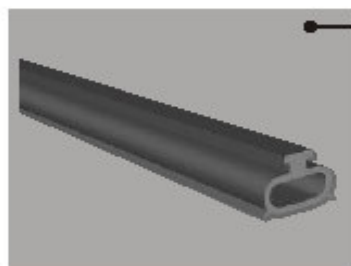




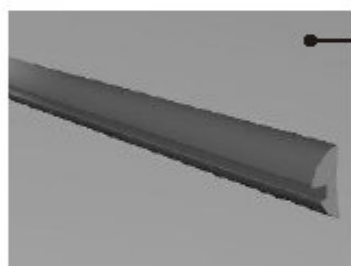
Accesorios Piel de Vidrio



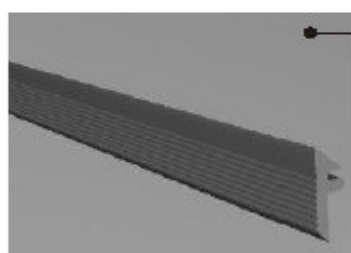
GUA-161
Burlete interior columna
Material: EPDM
Alternativa: silicona



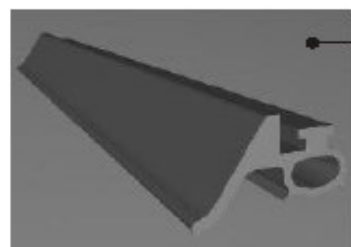
GUA-162
Burlete para columna
a 90° y 135°
Material: EPDM
Alternativa: silicona



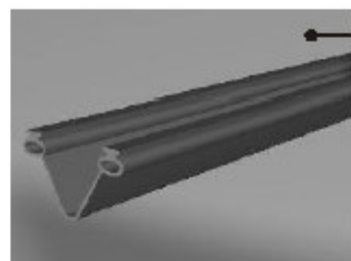
GUA-168
Burlete cuña para
vidrio 5/6mm
Material: EPDM
Alternativa: silicona



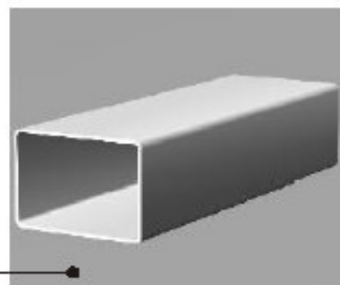
GUA-169
Burlete respaldo para
vidrio 5/6mm
Material: EPDM
Alternativa: silicona



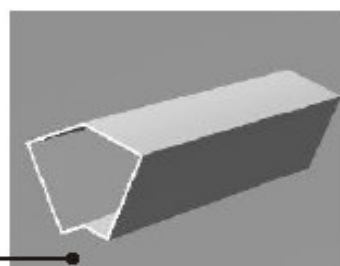
GUA-173
Burlete para bota aguas
D.V.H pegado
Material: EPDM
Alternativa: silicona



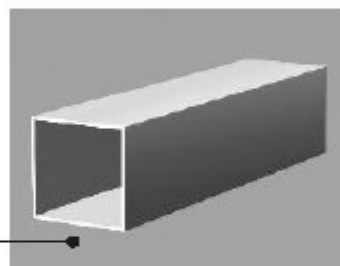
GUA-189
Burlete para rótula
Material: EPDM
Alternativa: silicona



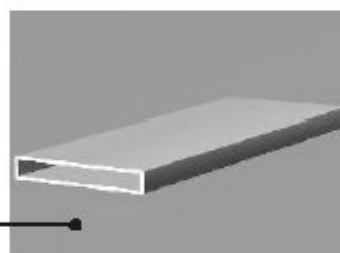
LUV-974
Empalme
columna FC-202
Material: aluminio



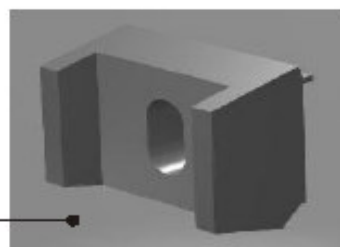
LUV-975
Empalme
columna FC-241
Material: aluminio



LUV-976
Empalme
columna FC-244
Material: aluminio



LUV-977
Empalme
columna FC-232
Material: aluminio



NYL-190
Botón de fijación de
tapacantos
Material: poliamida

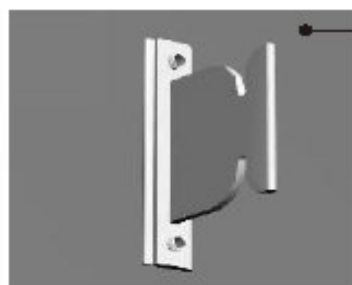


PRE-950
Presilla de hoja fija
Material: aluminio

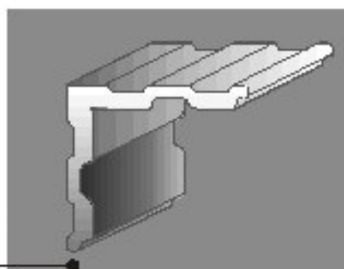




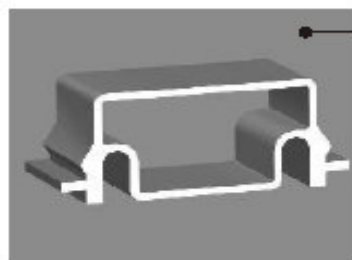
Accesorios Piel de Vidrio



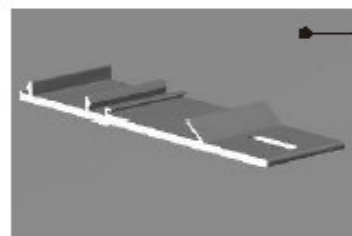
PRE-951
Presilla de columna
Material: aluminio



CON-404
Escuadra para punzonar
Material: aluminio



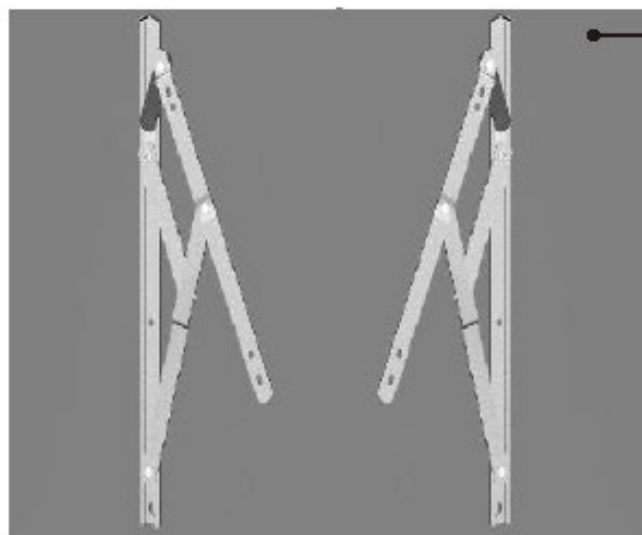
PRE-953
Presilla de revestimiento
Material: aluminio



PRE-954
Presilla de cielorraso
Material: aluminio



PRE-955
Presilla de hoja con
contravidrio.
Material: aluminio



Bisagra de fricción (par)
Material: acero inoxidable

BRA-534
Largo brazo: 408mm
Carga max./hoja: 63Kg.
Apertura max.: 90°

BRA-537
Largo brazo: 559mm
Carga max./hoja: 74Kg.
Apertura max.: 90°

BRA-620
Largo brazo: 255mm
Carga max./hoja: 50Kg.
Apertura max.: 80°

BRA-623
Largo brazo: 660mm
Carga max./hoja: 100Kg.
Apertura max.: 20°

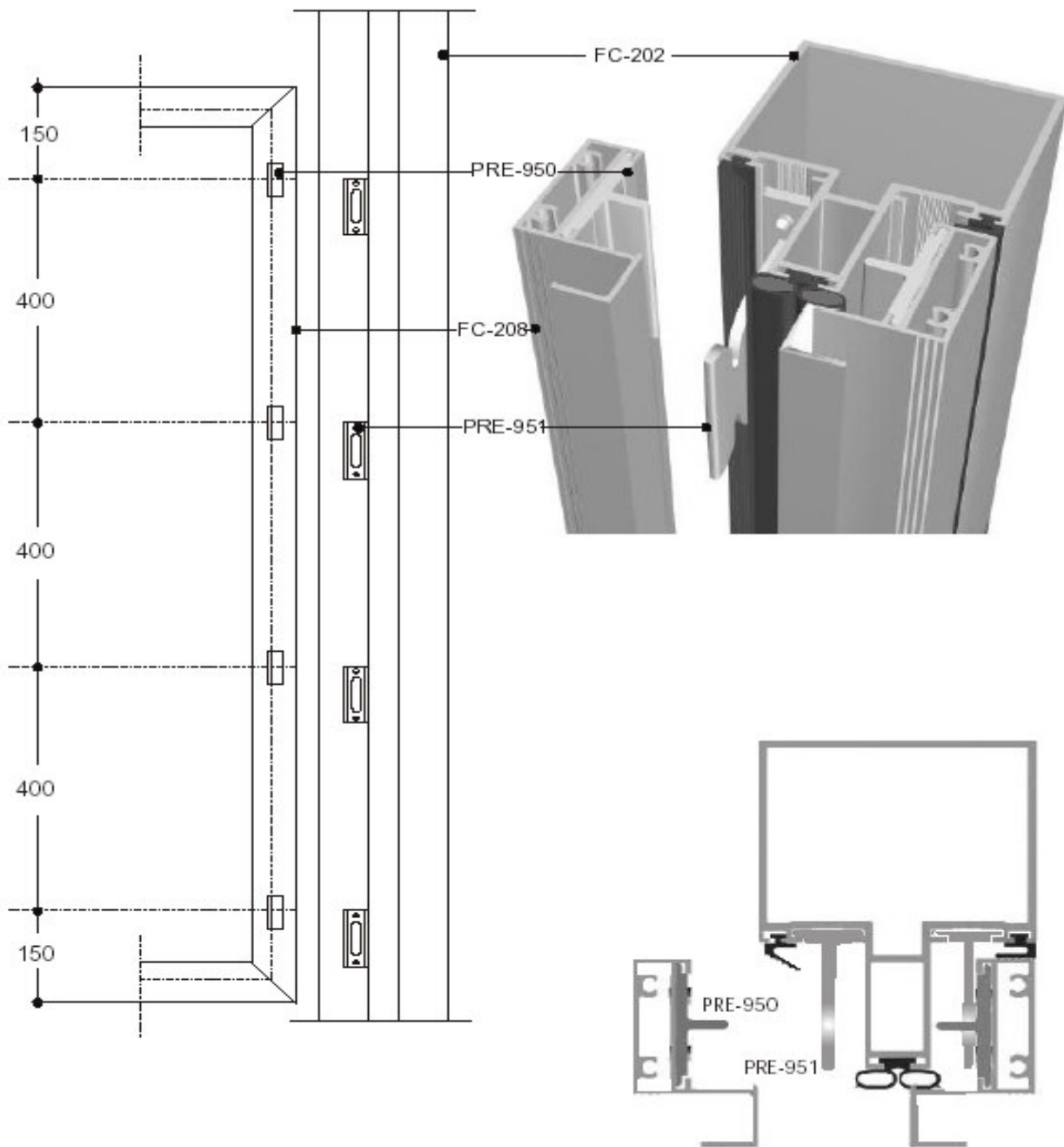
BRA-626
Largo brazo: 748mm
Carga max./hoja: 120Kg.
Apertura max.: 15°





Detalles constructivos

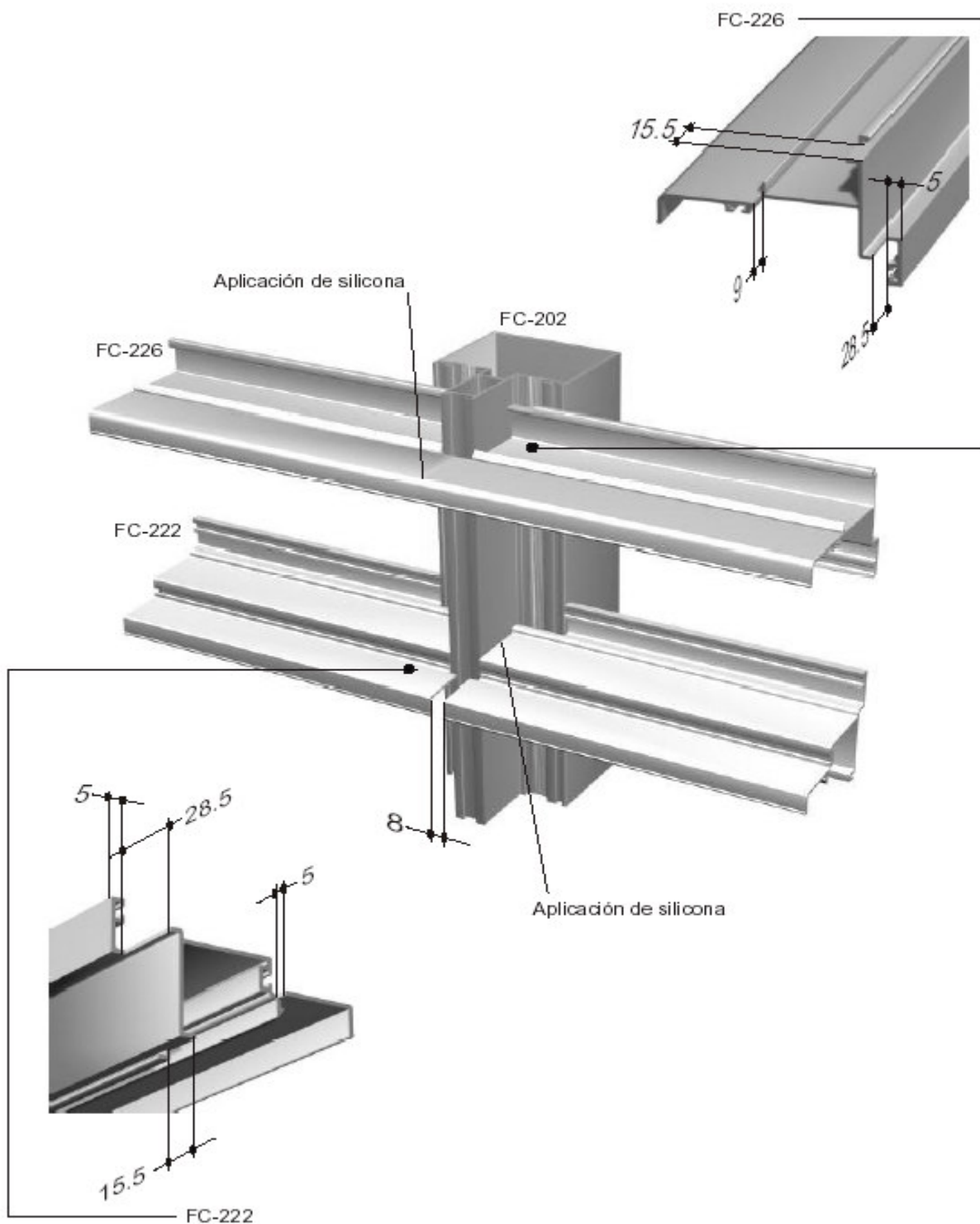
Ubicación de presillas para la fijación de las hojas





Detalles constructivos

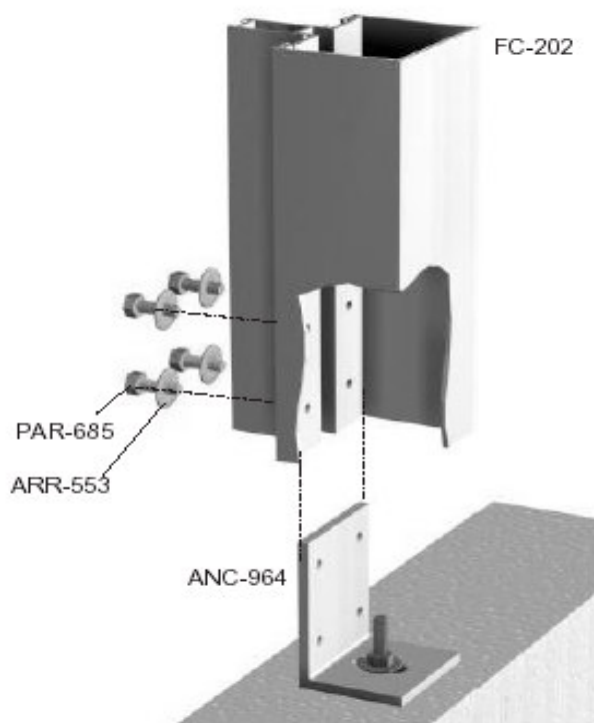
Maquinado y colocación de bota aguas





Detalles constructivos

Detalle fijación interior columna



Hoja de abrir: medidas máximas recomendadas

